

# ECONOMY SHOWER SPECIFICATIONS

## PEDESTAL

One piece weld construction with MDF standard  $\frac{3}{16}$ " wall thickness **or optional** 304 schedule 10 stainless steel.

## PUSH BAR

304 stainless steel with  $1\frac{1}{4}$ " x 2" stainless steel housing. Mushroom style push bar overlaps and prevents sand and other objects from sticking push bar in the ON position.

## SPRAY HEAD

One Shower Head.

## VALVE

Quick opening self closing valve.

## INSTALLATION

**SURFACE MOUNT (SM)** Showers are designed to be anchored to a concrete slab, by means of quick bolts or concrete shields. There have been instances where the surfact mount showers have been anchored to boardwalks or wooden decks.

## WINTERIZATION

Shut off water and drain down.

## SUPPLY LINE

Maintenance-free reinforced  $\frac{3}{8}$ " nylobraid tubing and  $\frac{1}{2}$ " IPS with inlet water strainer. Supply line stops above grade.

## FINISH

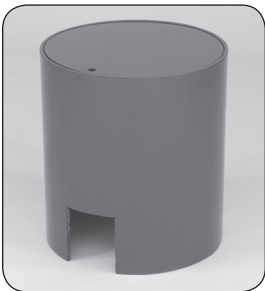
Oven-baked powder coat. Color choices: green, blue, brown, black, red, yellow, orange, white and chrome. Textured color choices: emerald, sapphire, pyrite, text-black, burgundy, gold vein, copper and sandstone. Stainless Steel fountains are powder coated for added protection and all colors listed are available.

## SHIPPING WT.

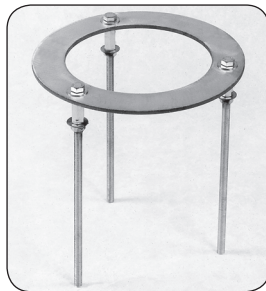
Model 5004 ..... 100 lbs.

**Note:** When ordering, please specify stainless steel by SS. Example: Specify 5004 SMSS to order 5004 Surface Mount in Stainless Steel. Please call MDF to assist you with ordering, quoting and shipping.

## OPTIONS



Valve Box



Carrier

**MOST DEPENDABLE FOUNTAINS, INC.**  
(800) 552-6331 • (901) 867-0039 • Fax (901) 867-4008  
5705 COMMANDER DR. • ARLINGTON, TN 38002-0587  
www.mostdependable.com

