

# ECONOMY SERIES DRINKING FOUNTAIN SPECIFICATIONS

## WATER QUALITY

Fountain meets NSF-61 requirements and has a UL approved label with a UL tracking number.

## PEDESTAL

1/8" wall thickness Steel Pipe. 6" diameter pedestal.

## BUBBLER HEAD

Model 700-A features a MDF solid stainless steel bubbler.  
Model 700-B features a push button bubbler head.

## WATER SUPPLY

Maintenance-free reinforced nylobraid tubing. This tubing is not plastic. It is supplied with a 1/2" MIP threaded inlet with a stainless steel strainer. Union fittings at every connection. Supply line stops above grade.

## FINISH

Oven-baked powder coat. Color choices: green, blue, brown, black, red, yellow, orange, white and chrome. Textured color choices: emerald, sapphire, pyrite, text-black, burgundy, gold vein, copper and sandstone. Stainless steel models are powder coated for added protection and all colors listed are available.

## WASTE

All waste external.

## ACCESS

Internal parts accessible through bowl an access door.

## INSTALLATION

**SURFACE MOUNT** typical. **DIRECT BURY** available.

## WINTERIZATION

Shut off water and drain down.

## WARRANTY

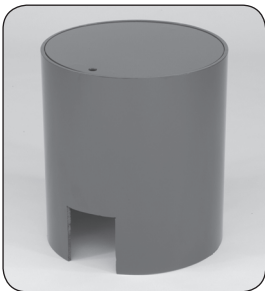
One year warranty. Labor not included.

## SHIPPING WT.

52 lbs.

**Note:** When ordering, please specify installation by DB for Direct Bury or SM for Surface Mount. Always note your color choice and options where applicable. (Options are added at an additional cost to the customer.) Example: Specify 700-A SM emerald to order a Model 700-A Surface Mount in the textured emerald. Please call MDF to assist you with ordering, quoting and shipping.

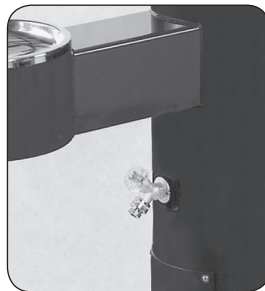
## OPTIONS



Valve Box



Carrier



Hose bibb



Hose bibb  
with locking cover



Jug filler

**MOST DEPENDABLE FOUNTAINS, INC.**  
(800) 552-6331 • (901) 867-0039 • Fax (901) 867-4008  
5705 COMMANDER DR. • ARLINGTON, TN 38002-0587  
www.mostdependable.com

