

SLIMLINE DRINKING FOUNTAIN SPECIFICATIONS

WATER QUALITY (LEAD FREE)

Fountain meets NSF-61 requirements and has a UL approved label with a UL tracking number.

PEDESTAL

One piece weld construction with MDF standard $\frac{3}{16}$ " wall thickness **or optional** 304 schedule 10 stainless steel.

RECEPTOR BOWL

18 gauge electro-polished stainless steel bowl, designed to overlap pedestal. Optional SS Bowl Strainer recommended for areas with sand.

BUBBLER HEAD

Push button.

STREAM CONTROL

Screwdriver adjustment under Push Button or Bubbler.

WATER SUPPLY (LEAD FREE)

Maintenance-free reinforced nylobraid tubing and fittings, NSF-61 certified. This tubing is not plastic. It is supplied with a $\frac{1}{2}$ " MIP threaded inlet with a stainless steel strainer. Union fittings at every connection. Supply line stops above grade.

FINISH

Oven-baked powder coat. Color choices: green, blue, brown, black, red, yellow, orange, white and chrome. Textured color choices: emerald, sapphire, pyrite, text-black, burgundy, gold vein, copper and sandstone. Stainless Steel fountains are powder coated for added protection and all colors listed are available.

WASTE

1 $\frac{1}{2}$ " schedule 40 PVC pipe. Waste line stops above grade.

ACCESS

Working parts accessible through bowl of fountain for easy service. Access door on main pedestal.

INSTALLATION

DIRECT BURY or **SURFACE MOUNT**. Optional Stainless Steel Surface Carrier recommended.

WINTERIZATION

Shut off water and drain down.

WARRANTY

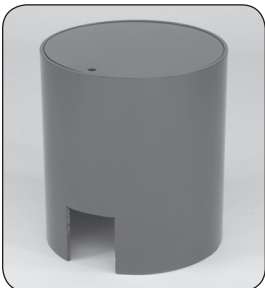
One year warranty. Labor not included.

SHIPPING WT.

Model 200 52 lbs.

Note: When ordering, please specify installation by DB for Direct Bury or SM for Surface Mount. Always note your color choice and options where applicable. (Options are added at an additional cost to the customer.) Example: Specify Model 200 SM in copper to order a Model 200 Surface Mount powder coated in the textured copper. Please call MDF to assist you with ordering, quoting and shipping.

OPTIONS



Valve Box



Carrier



Bowl sand strainer

MOST DEPENDABLE FOUNTAINS, INC.
(800) 552-6331 • (901) 867-0039 • Fax (901) 867-4008
5705 COMMANDER DR. • ARLINGTON, TN 38002-0587
www.mostdependable.com

